



Formwork · Scaffolding · Engineering

[in](#) [f](#) www.perihk.com | info@perihk.com | +852 3102 7900



Contact Us Now

Project: Hong Kong International Airport Three-Runway System

Systems in-used: DUO System Formwork, TRIO Panel Formwork, PS 100 Shoring System, HDS Heavy Duty Shoring, PERI UP Modular Scaffold, Tunnel Formwork Traveller, Special Formwork

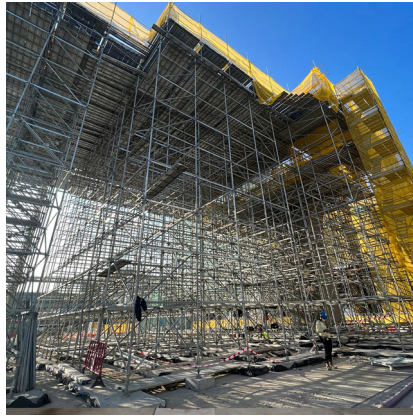
Founded in 1969, PERI is one of the largest manufacturers of formwork and scaffolding. With over 9,100 employees in more than 65 countries, we are your reliable partner in all phases of your project.

The Hong Kong International Airport Three-runway system project is one of the largest construction projects in the past few years, PERI has designed and supplied various systems for multiple contracts.



DUO System Formwork

A fully crane-independent universal lightweight formwork that can form all kinds of structures with high durability.



PS 100 Shoring System

Equipped with various unique features, it provides fast and easy assembly with permissible load up to 100 kN per leg.



HDS Heavy-Duty Shoring

With permissible load up to 1000 kN per leg, it is fast and efficient to assemble with only 2 standard connection types.



TRIO Panel Formwork

A versatile formwork that ensures simple shuttering procedures reduces shuttering times due to larger panels.



Tunnel Formwork Traveller

PERI supplies cost-effective steel tunnel formwork solution that meets any project needs and requirements.



PERI UP Modular Scaffold

Our elite engineering team can design and create tailor-made special formwork solutions.

Special Formwork

We design and create tailor-made special formwork solutions.